
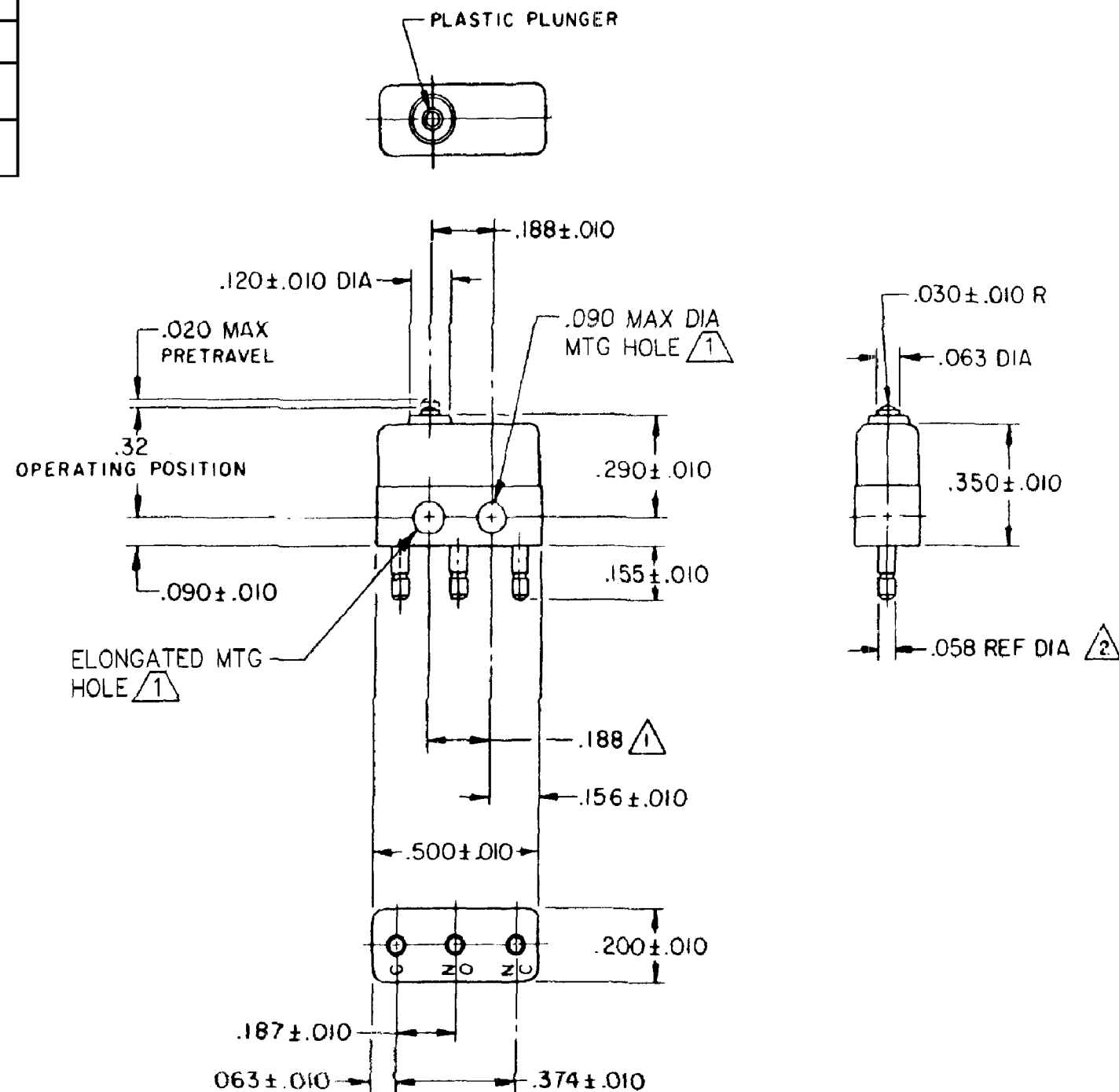





HONEYWELL PART NUMBER
1SX1-H58
PRODUCT CODE VDA0050
FAA-PMA 

REV	DOCUMENT	CHANGED BY	CHECK
14	0038446	KVB 20MAY08	BLR



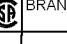


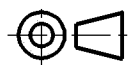
NOTES

-  MOUNTING HOLES WILL ACCEPT PINS OR SCREWS OF .087 MAX DIA ON .188 ± .002 CENTERS
-  PLATED TERMINALS WILL ACCEPT "AMP INC" .058 DIA PIN RECEPTACLES.
- 3 - SWITCH WILL WITHSTAND TEMPERATURE OF 250° F
-  - FOR MANUFACTURING DETAIL SEE ASSEMBLY DRAWING 1SX1-H58 FOR FAA-PMA

RELEASE NO.	SR12430
REPLACES	X36517

CHARACTERISTICS	
OPERATING FORCE	5 OZ MAX
RELEASE FORCE	1 OZ MIN
DIFFERENTIAL TRAVEL	.005 MAX
OVERTRAVEL	.004 MIN

ELECTRICAL DATA		
CONTACT ARRANGEMENT SPDT		
28 VOLTS DC RATING		
	SEA LEVEL	50,000 FT
INDUCTIVE	4 AMP	2.5 AMP
RESISTIVE	7 AMP	7 AMP
MAXIMUM INRUSH 24 AMP		
APPROVALS	KEMA, CE	7A 250V ~ T125 5E4 
	UL, CSA	7A 250 VAC   BRAND L7

DESIGN UNITS: INCH
TOLERANCES UNLESS NOTED:
NO PLACE X ±
ONE PLACE .X ±
TWO PLACE .XX ±
THREE PLACE .XXX ±
FOUR PLACE .XXXX ±
ANGLES ±
THIRD ANGLE PROJECTION


DRAWN	SPK	26NOV07
CHECK	RJ	26NOV07
THIS DRAWING COVERS A PROPRIETARY ITEM AND IS THE PROPERTY OF HONEYWELL. THIS DRAWING IS NOT TO BE COPIED OR USED WITHOUT THE PERMISSION OF HONEYWELL.		
INTERPRET PER ANSI Y14.5M-1982 OTHER HONEYWELL ENGINEERING STANDARDS MAY APPLY		
RASTER		

<b>Honeywell</b>			
TITLE SWITCH - BASIC			
SIZE	TYPE	DRAWING NAME	REV
B	I	1SX1-H58	14
SCALE	WEIGHT	SHEET 1 OF 1	